



Order Desk:

Michael Leach

E: Michael.Leach@elementfive.co

C: (888) 670-7713 x45

CLT Billets



11/30/2022

Visual (Sanded) Billet

	Depth:	Width:	Length:	m ³ :	Weight:
3 Layers	105 mm	3,100 mm	15,800 mm	5.040	2,369 kg
5 Layers	175 mm	3,100 mm	15,800 mm	8.400	3,948 kg
7 Layers	245 mm	3,100 mm	15,800 mm	11.760	5,527 kg

Non-Visual (Non Sanded) Billet

	Depth:	Width:	Length:	m ³ :	Weight:
3 Layers	105 mm	3,100 mm	15,800 mm	5.040	2,369 kg
5 Layers	175 mm	3,100 mm	15,800 mm	8.400	3,948 kg
7 Layers	245 mm	3,100 mm	15,800 mm	11.760	5,527 kg

Billets

CLT Billets offer a sustainable, cost-effective, and human centered construction alternative to concrete and steel. CLT can be used in many structural applications including floors, walls, roofs, shearwalls, CLT elevator cores, and stairs.



Wood Species:	SPF (Spruce Pine Fir)
Stress Grade:	V2
Surface Classification:	Non-Visual (Not Sanded) or Visual (One Side Sanded)
Billet Edges:	Rough - Billet dimensions are net of the rough edges
Manufacturing Standard:	PRG-320 2019
Panel Shape:	"L" panels (Surface layer parallel to panel length) or "C" panels (Surface layer perpendicular to panel length) specified upon order
Panel Design:	Minimum of three layers of bonded single-layer panels arranged at right angles to each other
Lumber Sorting Grade:	No. 1 / No. 2
Moisture Content	12% ± 3% at time of production
Bonding Adhesive:	Two-part adhesive for finger joining and purbond polyurethane

Element5 is a mass timber manufacturer offering an integrated suite of products and services to support mass timber projects across Canada, the USA and internationally. Our fully automated, state-of-the-art factory in St. Thomas, Ontario produces visually superior, edge-glued CLT Billets made from sustainably sourced SPF lumber.

We take pride knowing our products and buildings are making a difference for people and the planet. Let our team help you optimize your next mass timber project.

L Panels (surface layers parallel to panel length)

LAYERS	DEPTH (mm)	L	T	L	T	L	T	L
3 Layers	105	35	35	35				
5 Layers	175	35	35	35	35	35		
7 Layers	245	35	35	35	35	35	35	35

C Panels (surface layers perpendicular to panel length)

LAYERS	DEPTH (mm)	T	L	T	L	T	L	T
3 Layers	105	35	35	35				
5 Layers	175	35	35	35	35	35		
7 Layers	245	35	35	35	35	35	35	35



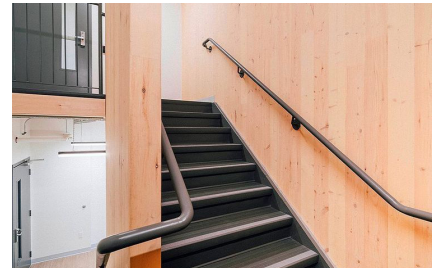
The construction industry is evolving toward off-site manufactured, prefabricated structures made possible in part by the introduction of CLT (Cross Laminated Timber). Below is a small selection of CLT projects by Element5 and others meant to inspire.



Waterfront Center



Fire Station



Affordable Housing



Garage and Living Space



Aboriginal Health Care Center



Lecture Hall



Cafe



Affordable Housing



Bird Banding Station



Boater's Pavilion



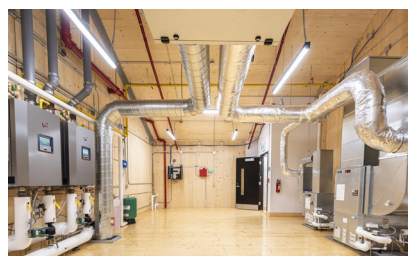
First Nation Single Family Housing



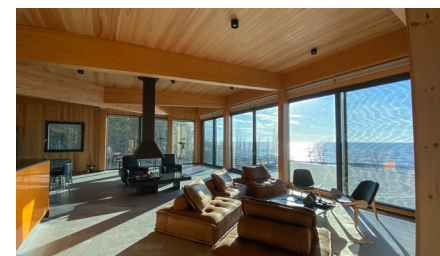
Single Family Home



Affordable Housing



Fire Station



Single Family Home